

ITPassLeader

Pass Your Next Certification Exam Fast!

Select a vendor... | Select an test... | Your email address | Free Download Demo

- Instant Download
- 365 Days Free Updates
- Money Back Guarantee
- Security & Privacy

Choose the version that fits your needs	PDF Version	Desktop Test Engine	Online Test Engine
Latest and Up-to-Date exam dumps with real exam questions answers.	✓	✓	✓
Get 12-Months free updates without any extra charges.	✓	✓	✓
Experience same exam environment before appearing in the certification exam.	✗	✓	✓
100% exam passing guarante in the first attempt.	✓	✓	✓
20% discount on more than one license and 30% discount on 5+ license purchases.	✗	✓	✓
100% secure purchase on SSL.	✓	✓	✓
Completely private purchase without sharing your personal info with anyone.	✓	✓	✓

<http://www.itpassleader.com>

High-praise Exam Dumps Questions grant you success by high pass rate - ITPassLeader

Exam : **C2020-003**

Title : **IBM Algo One Fundamentals**

Vendor : **IBM**

Version : **DEMO**

NO.1 When using RiskWatch,by default,which script file does it search for to run?

- A. InitScript.rs
- B. riskScript.rws
- C. RiskScript.rs
- D. DefaultScript.rws

Answer: B

NO.2 Which three properties would be set for a layer in a model? (Choose three.)

- A. Step length
- B. Portfolio Date
- C. Layer End Date
- D. Model name
- E. Layer name

Answer: A,C,E

NO.3 Which two parameters are required for the generation of Monte Carlo scenarios using the Algo Scenario Engine? (Choose two.)

- A. simulation start date
- B. number of triggers and trigger size
- C. an active connection to the Algo database using UDS
- D. a minimum of 365 days of historical data

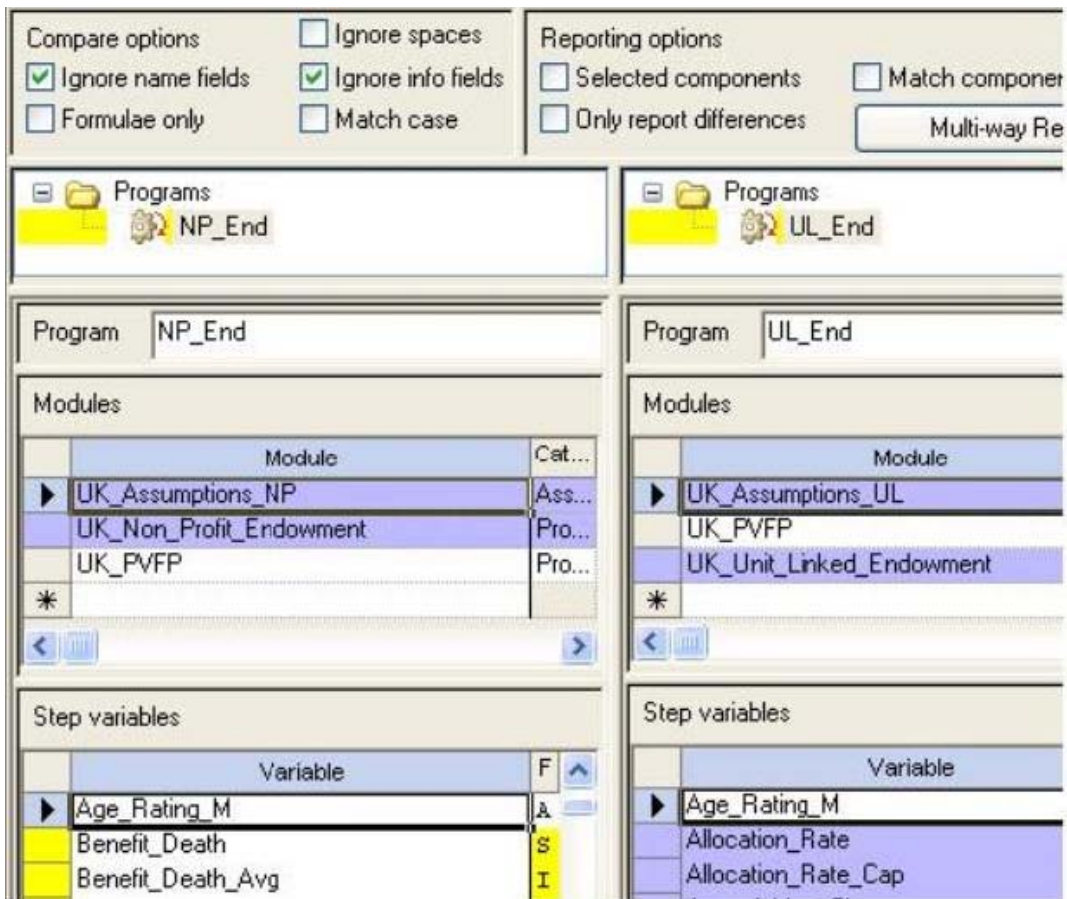
Answer: A,B

NO.4 In which two formats will Algo Batch generate execution reports? (Choose two.)

- A. PDF
- B. CSV
- C. BIN
- D. HTML

Answer: B,D

NO.5 Click the Exhibit button.



The exhibit shows a picture of the compare page.

What is meant by the yellow highlighted areas in the Step variables box?

- A. A variable or property is common to both the components but is not used in either.
- B. A variable or property is common to both the components but has a different formula or value.
- C. A variable or property only appears in one of the components.
- D. A variable or property is common to both the components but one appears on a step and the other on an event.

Answer: B

NO.6 In some cases,UDS loadable input data name and ID values contain quotationmarks and/or commas such as the name shown below:

ABC "OPINO"

Given the information above,which example record is formatted for a correct dataload?

- A. BAS,Fixed Rate BondSPEC,Fixed Rate BondSPEC,Fixed Rate Bond,ABC"OPINO"
- B. BAS,Fixed Rate BondSPEC,Fixed Rate BondSPEC,Fixed RateBond,"ABC \"OPINO\""
- C. BAS,Fixed Rate BondSPEC,Fixed Rate BondSPEC,Fixed RateBond,ABC \"OPINO\""
- D. BAS,Fixed Rate BondSPEC,Fixed Rate BondSPEC,Fixed Rate Bond,ABC""OPINO""

Answer: D